

# ليت للبراق عينا اسمهان

www.ruedemalte.com

♩ = 81



A musical score for a piece titled "Layl al-Braq" by Asma Hanan. The score is written in a single system with ten staves, each containing two lines of music. The key signature is one flat (B-flat major or D minor), and the time signature is 4/4. The tempo is marked as ♩ = 81. The score begins with a treble clef and a key signature of one flat. The music features a mix of eighth and sixteenth notes, with some rests and dynamic markings. The piece concludes with a final cadence on the tenth staff.

26



28



31



33



36



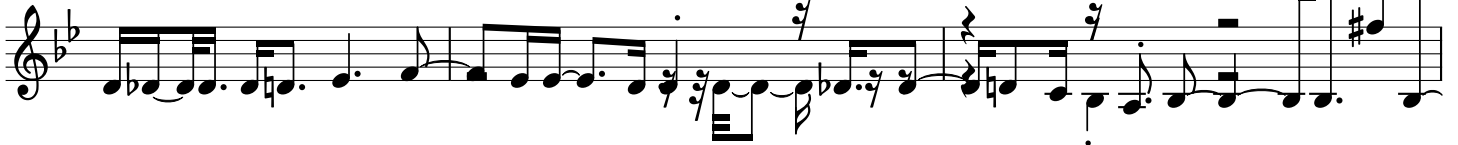
39



42



44



47



49



51



53



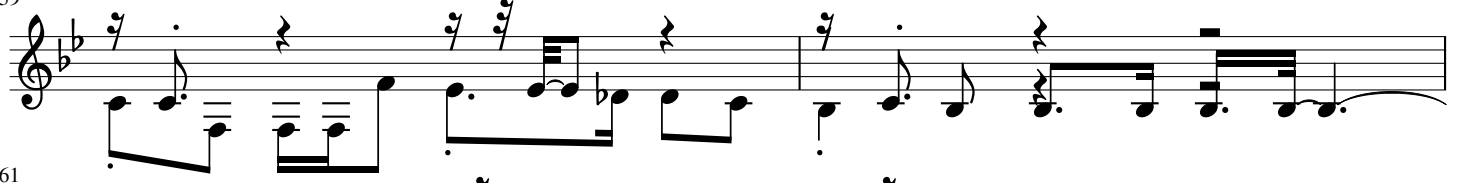
55



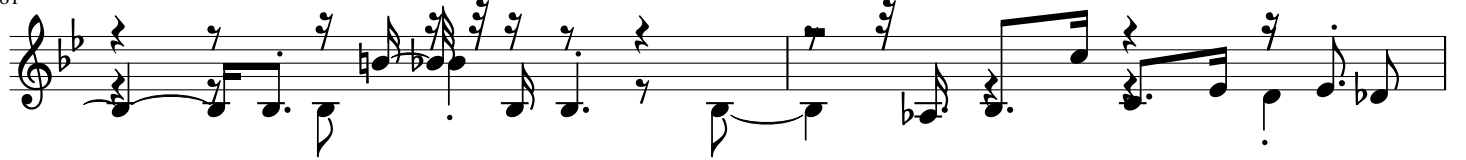
57



59



61



63



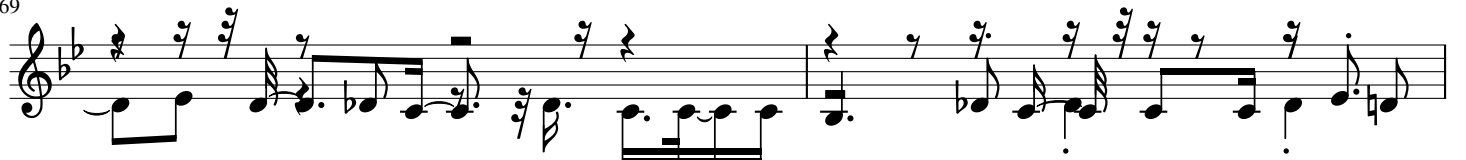
65



67



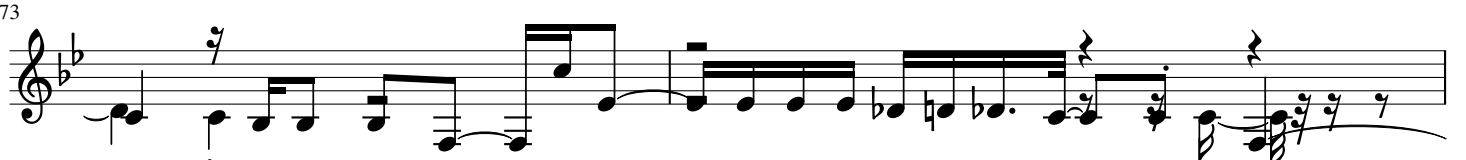
69



71



73



75



78



81



84



86



88



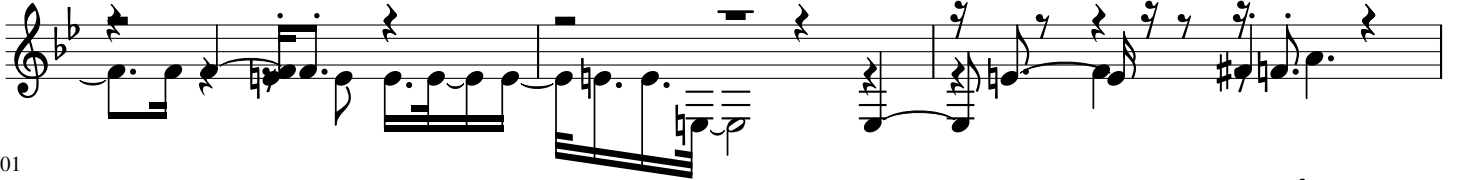
91



94



98



101



104



107

Musical staff 107, featuring a treble clef and a key signature of two flats. The staff contains a sequence of notes including quarter notes, eighth notes, and sixteenth notes, with various accidentals and rests.

109

Musical staff 109, continuing the melodic line with similar rhythmic patterns and accidentals.

111

Musical staff 111, showing a continuation of the musical phrase with various note values and rests.

113

Musical staff 113, featuring a series of sixteenth-note runs and quarter notes.

115

Musical staff 115, containing a mix of eighth and sixteenth notes with some slurs.

117

Musical staff 117, showing a continuation of the melodic development with various rhythmic figures.

119

Musical staff 119, featuring a more complex rhythmic pattern with many sixteenth notes.

121

Musical staff 121, continuing the intricate melodic line with various note values and accidentals.

123

Musical staff 123, showing a continuation of the musical phrase with various note values and rests.

125

Musical staff 125, featuring a series of sixteenth-note runs and quarter notes.

128

Musical staff 128, containing a mix of eighth and sixteenth notes with some slurs.

130

Musical staff 130, featuring a treble clef, a key signature of two flats (B-flat and E-flat), and a complex melodic line with various rhythmic values including eighth and sixteenth notes, and rests.

133

Musical staff 133, continuing the melodic line with similar rhythmic complexity and articulation.

137

Musical staff 137, showing a continuation of the melodic development with some rests.

139

Musical staff 139, featuring a melodic line with frequent eighth-note patterns.

141

Musical staff 141, continuing the melodic line with various rhythmic values.

143

Musical staff 143, showing a melodic line with frequent eighth-note patterns.

145

Musical staff 145, continuing the melodic line with various rhythmic values.

147

Musical staff 147, featuring a melodic line with frequent eighth-note patterns.

149

Musical staff 149, continuing the melodic line with various rhythmic values.

151

Musical staff 151, featuring a melodic line with frequent eighth-note patterns.

153

Musical staff 153, showing a melodic line with various rhythmic values.