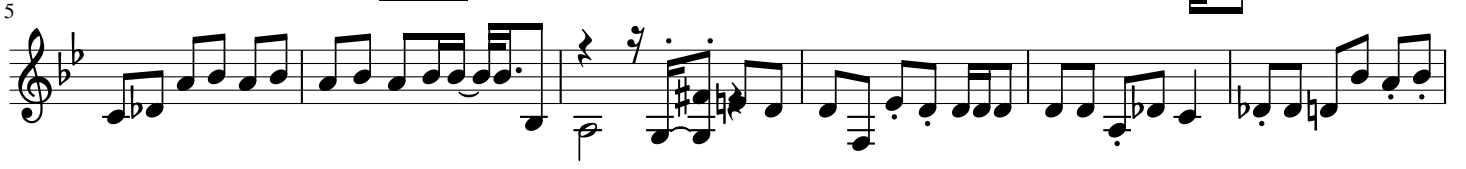
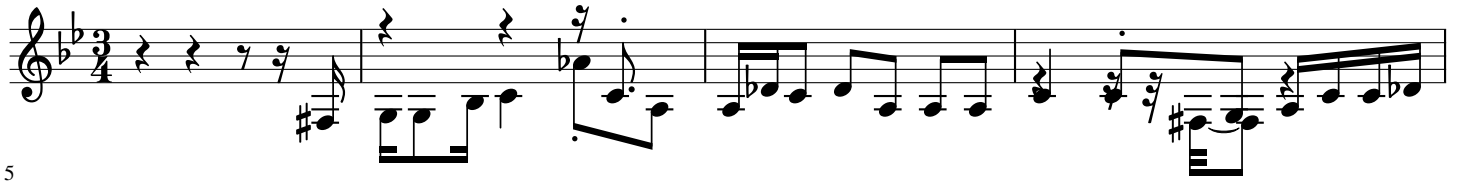


# الساحرة علية التونسية

www.ruedemalte.com



53



59



64



68



72



77



82



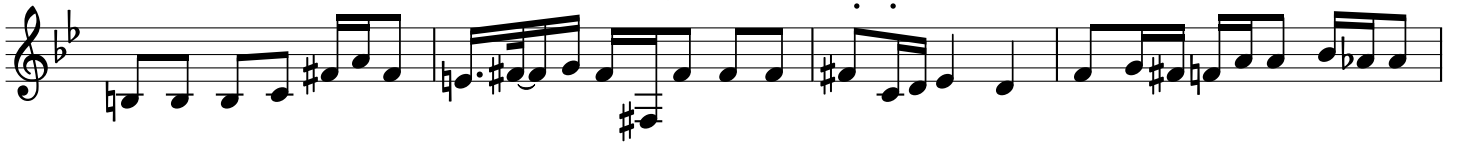
88



93



98



102



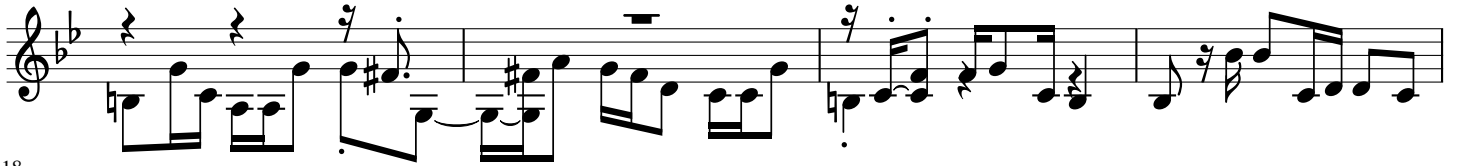
106



110



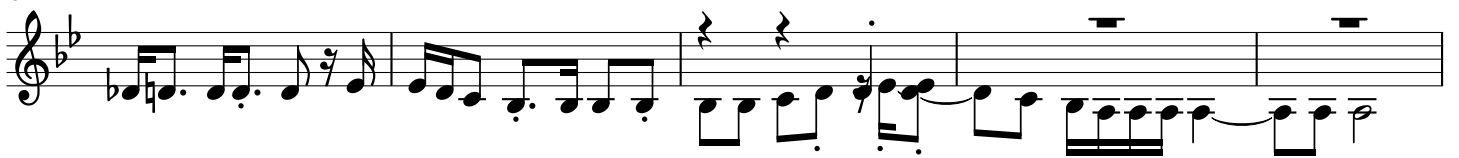
114



118



123



128



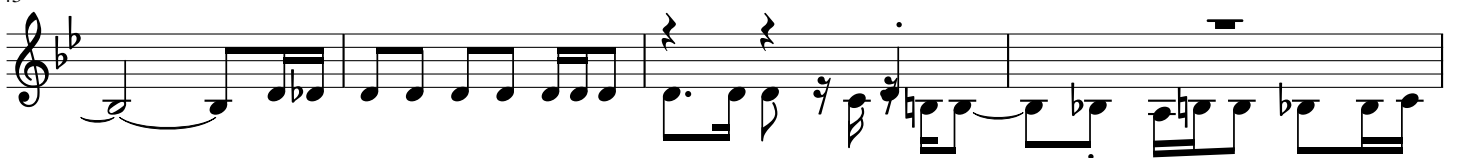
133



138



143



147



151



157



161



165



169



173



177



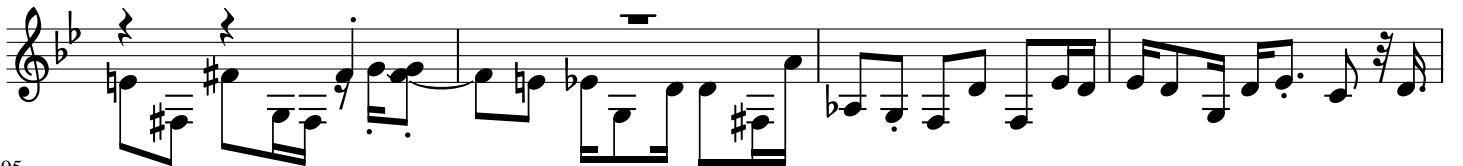
181



186



191



195



198



202



206



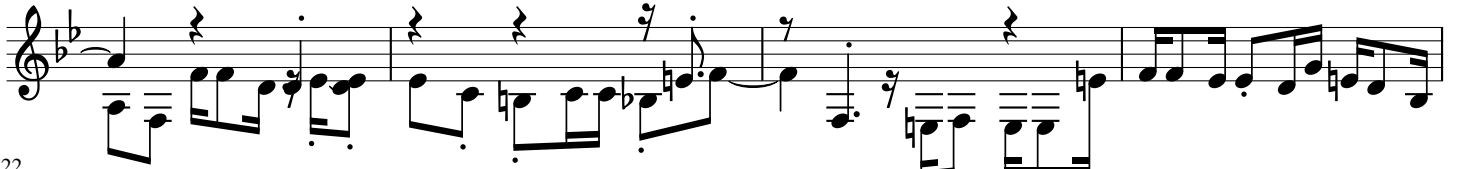
210



214



218



222



225



229



233



238



243



247



251



255



259



263



267



271



275



279



283



287



291

Musical staff 291, featuring a treble clef and a key signature of two flats. The staff contains a sequence of notes and rests, including eighth and sixteenth notes, with various accidentals and dynamic markings.

295

Musical staff 295, continuing the piece with a treble clef and two flats. It features a mix of eighth and sixteenth notes, some with accents and slurs.

299

Musical staff 299, showing a continuation of the melodic line with a treble clef and two flats. The notation includes eighth and sixteenth notes with various articulations.

303

Musical staff 303, featuring a treble clef and two flats. The staff contains eighth and sixteenth notes, some with slurs and dynamic markings.

307

Musical staff 307, continuing the piece with a treble clef and two flats. It features eighth and sixteenth notes with various accidentals.

312

Musical staff 312, showing a continuation of the melodic line with a treble clef and two flats. The notation includes eighth and sixteenth notes with various articulations.

316

Musical staff 316, featuring a treble clef and two flats. The staff contains eighth and sixteenth notes, some with slurs and dynamic markings.

320

Musical staff 320, continuing the piece with a treble clef and two flats. It features eighth and sixteenth notes with various accidentals.

324

Musical staff 324, showing a continuation of the melodic line with a treble clef and two flats. The notation includes eighth and sixteenth notes with various articulations.

329

Musical staff 329, featuring a treble clef and two flats. The staff contains eighth and sixteenth notes, some with slurs and dynamic markings.

333

Musical staff 333, continuing the piece with a treble clef and two flats. It features eighth and sixteenth notes with various accidentals.

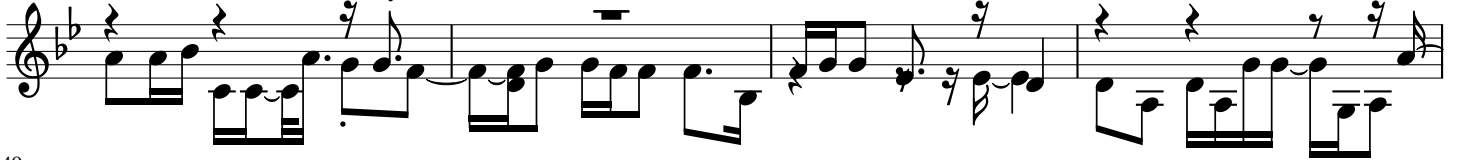
337



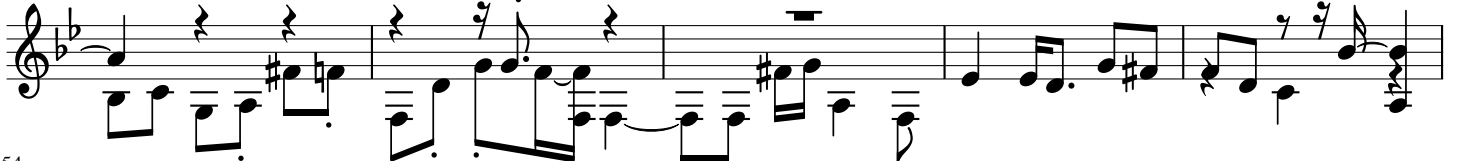
341



345



349



354



358



362



366



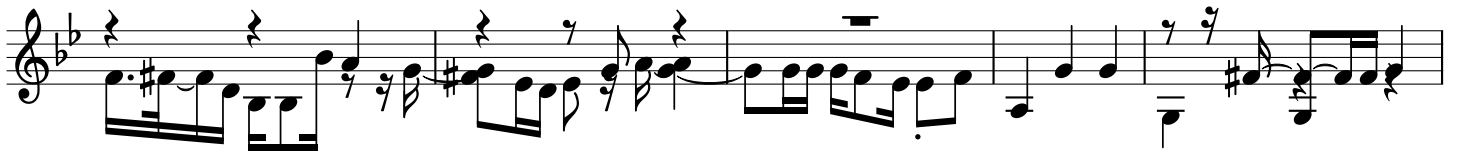
370



375

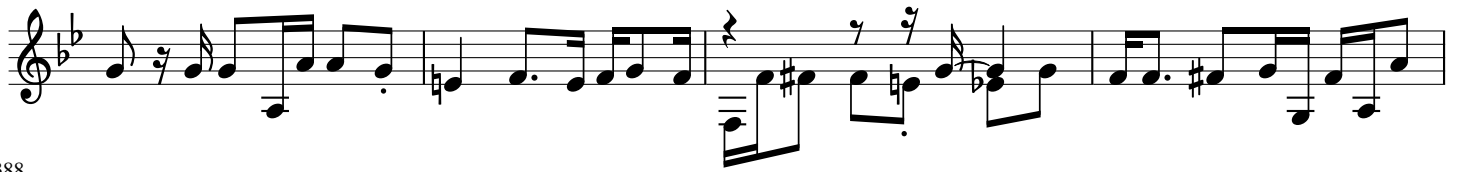


379

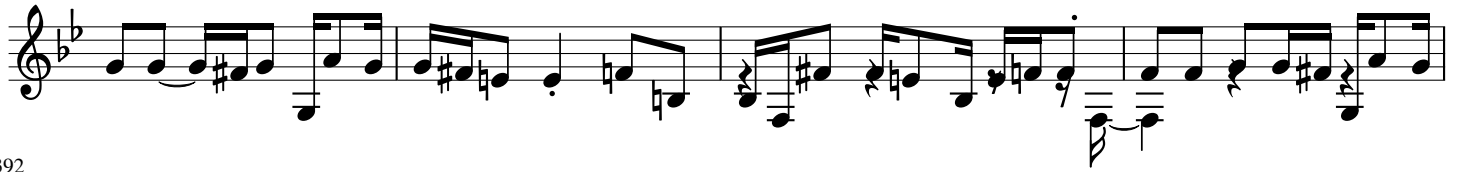




384



388



392



396



401



407



411



416



420



424



428



431



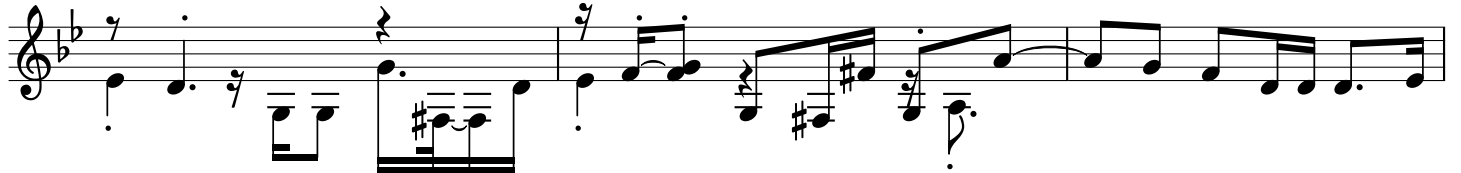
435



439



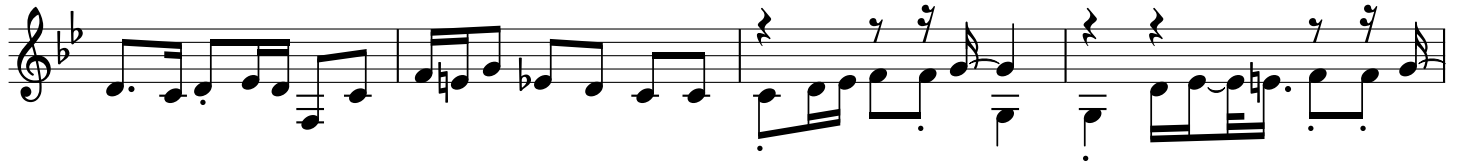
443



446



449



453



457

